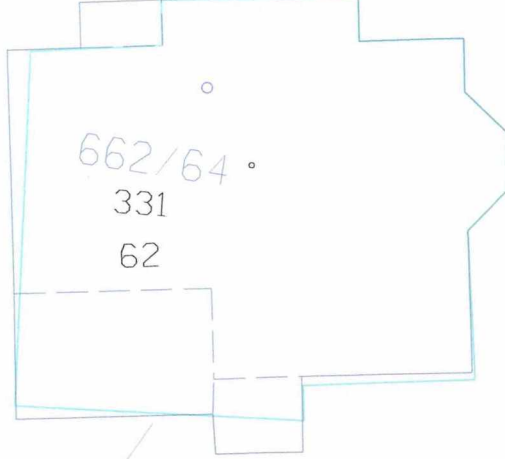
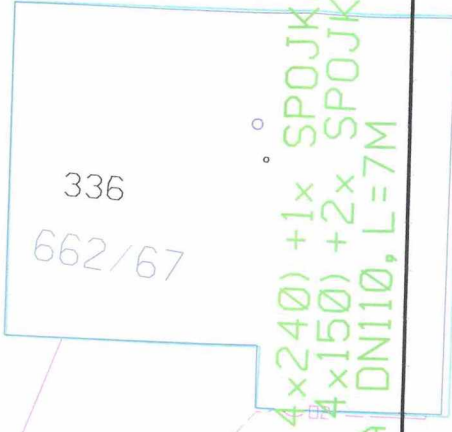


3x (22-NA2XSY 1x240) +HDPE 40/33  
2x (1-NAYY 4x240)

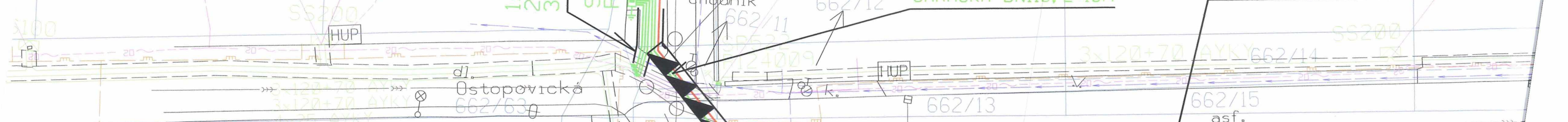


1x (1-NAYY 4x240) +1x SPOJKA NN  
2x (1-NAYY 4x150) +2x SPOJKA NN  
3x CHRÁČKA DN110, L=7M

SD822/NK  
R768922  
FeZn 30/4, L=20M

1-NAYY 4x150  
CHRÁČKA DN110, L=10M

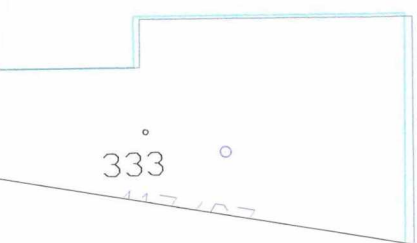
FeZn 30/4, L=20M



1424/2

PŘEKOP 12M, 0,8x1,2m  
3x (22-NA2XSY 1x240) +HDPE 40/33  
+CHRÁČKA D160, L=18  
+BETONOVÝ ŽLAB, L=6M  
1-NAYY 4x240  
+CHRÁČKA D110, L=18M  
+BETONOVÝ ŽLAB, L=6M

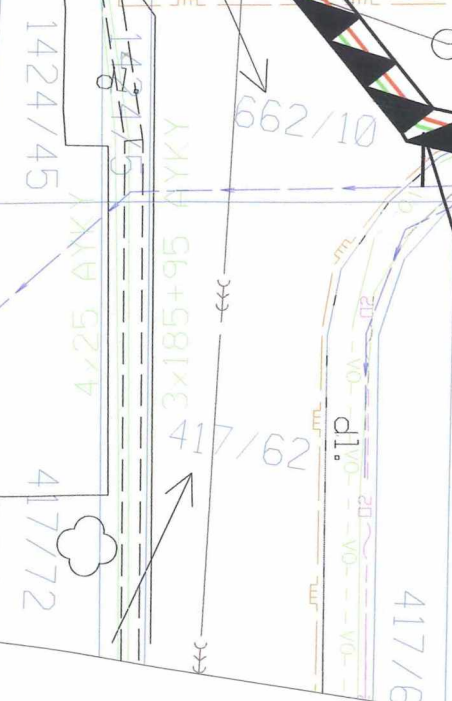
3x (22-NA2XSY 1x240)  
+HDPE 40/33  
1x (1-NAYY 4x240)  
1x (1-NAYY 4x150)



417/64

417/14

417/38



417/62

417/6